

YOUNGTIMER TROPHY GRUPPO 2

1 / 2
APRIL
2023



Rules



Loc. RONCOLE VERDI 14/15
BUSSETO - PARMA - ITALY

Type
of
RACE



GRUPPO 2

YOUNGTIMER TROPHY

Endurance Slot Cars Championship with teams of 3/4 drivers. 2 races of 90 minutes each on Saturday (1 race MINICARS and 1 race GROUP2) and 2 races of 162 minutes each on Sunday (1 race MINICARS and 1 race GROUP2).
27 teams maximum allowed to the championship.

A score will be awarded at each race, in the first 2 races the score will be halved, in the second 2 races full score. The team with most points at the end of the 4 races wins the title.

The race area will consist in 2 tracks: TRACK 1: wooden track 8 lanes for the GROUP2 models - TRACK 2: Scaleauto PRO-TRACK plastic 8 lanes for the MINICARS models.

The championship will take place in 3 days: Friday only free practice. Saturday free practice on both tracks and 1 race MINICARS and 1 race GROUP2 for each team. Sunday 1 race MINICARS and 1 race GROUP2 for each team.

Every team will have to present at "parc fermée" with 2 MINICARS models and 2 GROUP2 models and will race: MINICARS - race 1 with one model, race 2 with the other model with the possibility to switch with the first model at half race. Same for the GROUP2 category.

For each race 9 teams will start on the wooden track with the GROUP2, 9 teams will start on the Scaleauto plastic track with the MINICARS and 9 teams stopover with round robin mode.

At the end of one race the teams will in turn reverse the tracks, change class and restart for the next race, until all the teams will have complete the full rotation on each track.

The **BRM** models allowed to race for the 2 classes are:

MINICARS:

NSU TT



RENAULT R8 GORDINI



Mini Cooper



ABARTH 1000TCR



SIMCA 1000



A 112 ABARTH

GROUP 2:

Ford Escort MK I



Alfa Romeo GTA



Opel Kadett GTE



BMW 2002



VW Scirocco



Introduction

This regulation specifies in detail the features and components that the cars must respect.

Changes not specified in the rules are prohibited.

On some models we clarify the allowed changes.

During the technical inspections and the races, the only allowed lubricants will be supplied by the organization.

Even if there will be supplied some soldering/welders the organization will not be responsible for their malfunction.

Each team should have his own during verification and race.

The use of a free component doesn't imply any change, replacement or omission that is not specified in these rules.

Supply of motors and tires

The organization will drawn for each model:

1 original motor **BRM-blue** 19.000rpm - **BRM s-417**;

1 Nylon Pinion 12T **BRM s-420** diameter 6,8mm;

1 Nylon Pinion 11T **BRM s-420S** diameter 6,4mm

Rear tires: **BRM s-404** (MINICARS), **BRM s-404k** (GROUP 2)

s-404M (Mini Cooper - A112 with wheels S-402MC)

The tires and motor assembling will be in "Park closed".

The motors will be selected by the organization checking rpm and energy to be most equal as possible.



S-402 - Wheels



S-404
Rear tyres

S-402MC - Wheels



S-404M
Rear tyres (x2)

TECHNICAL

Rules

1. Maximum track

1.1 The rims can't be out from the wheel arches (view from the top).



2. Chassis

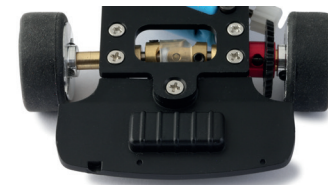
2.1 Each model must have his own specific chassis (internal/external).



2.2 The 2 chassis must be fixed using the brass BRM nuts original **s-415** (h 1.5 mm) or **s-415a** (1.0 mm no movement), **s-415b** (h 2.0 mm), **s-415c** (h 2.5 mm) o **s-415d** (h 3.0 mm).



2.3 The rear plastic part of the chassis must be assembled (except Mini Cooper and Scirocco).



3. Motor holder

- 3.1 The only allowed motor holder is the original **BRM s-413** + photoetch (BRM S-013P).



4. Brass joint – Axle holders

- 4.1 MINICARS: Brass joint original **BRM s-414**.
- 4.2 MINICARS: Rear brass axle holders **S-412** (large), **S-412F** (narrow) or aluminum axle holder double bearings **S-412S** (camber).
GROUP2: Rear stock axle holders BRM: Kadett GT/E S-412K, Alfa GTA/BMW2002 S-412A, Escort MKI **S-412E** (straight).
- 4.3 MINICARS: Front original axle holders BRM **S-411** or **S-411M** (Mini Cooper-A112 independent axle) (straight)
GROUP2: Front original axle holders BRM: Kadett GT/E / Scirocco **S-411K**, Alfa GTA/BMW2002 **S-411A**, Escort MKI **S-411E** (camber).
- 4.4 For the MINICARS class you can assemble the axle holders independent wheels **S-411M** on all the models.



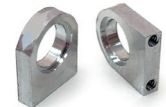
s-414



s-412f



s-412s



s-412k



s-411



s-411m



s-411k

TECHNICAL

Rules

5. Axles - Bearings - Spacers - Screws

5.1 Front axle free

A112 / Mini Cooper: front semi-axle **BRM S-416M** or axle with stopper.

GROUP 2: front semi-axle **BRM S-416K/416A** or axle with stopper.

5.2 MINICARS: Rear axle free or semi-axle **BRM S-416J / S-416** (included also front 56mm axle)

GROUP2: Rear axle free or BRM axle 58mm **S-416KR**.

5.3 To use the front independent axle holders **BRM s-411m**, use semi-axes **BRM s-416m**.

5.4 Brass original bearings **BRM s-409**

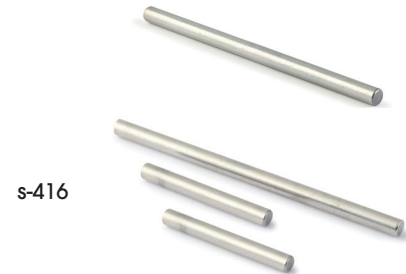
5.5 Free ball bearings or **BRM S-410**

5.6 Free spacers for 3mm axle.

5.7 It's allowed to use stoppers for 3mm axle.

5.8 The chassis screws for the axle/motor holders and the 4 brass "nuts" are free.

5.9 Grub screws M3 for gears and wheels are FREE.



6. Spur gear

6.1 Original spur gear 33T **BRM s-419** or new Ergal **BRM s-419a**.



7. Pick-up

7.1 Pick-up original **BRM s-026ss**.



7.2 Allowed Pick-up REVOSLOT rs210 - rs210w.



7.3 It's allowed remove the spring and reduce the height of the blade.



TECHNICAL

Rules

MODEL	FRONT WHEELS	REAR WHEELS	∅
Mini Cooper	s-402m / 402 mc	s-402m / 402 mc	16,8 mm / 13,7 mm
Simca 1000	s-402 / 402s	s-402 / 402s	17,0 mm
NSU TT	s-402	s-402	17,0 mm
Abarth 1000 TCR	s-402f	s-402fr	15,5 mm
Renault Gordini r8	s-402	s-402	17,0 mm
A112 Abarth	s-402s / 402 mc	s-402s / 402 mc	17,0 mm / 13,7 mm
Opel Kadett GTE	s-402kf	s-402kr	16,7 ant. - 17,3 post.
Escort MK I	s-402kf	s-402kr	16,7 ant. - 17,3 post.
Alfa GTA	s-402kf	s-402kr	16,7 ant. - 17,3 post.
BMW 2002	s-402kf	s-402kr	16,7 ant. - 17,3 post.
VW Scirocco	s-402kf	s-402kr	16,7 ant. - 17,3 post.

8. Wheels - Inserts

8.1 See the wheels tabel

8.2 The wheel inserts are mandatory but you can interchange them between the models but they must be the same type on the 4 wheels



9. Wheels - Front tyres

9.1 Front tires **MINICARS**

BRM S-403 (original on wheel Ø 17mm)

BRM S-403S (lowered on wheel Ø 16.8/17mm)

BRM S-403F (original on wheel Ø 15.5mm)

BRM S-403FL (lowered on wheel Ø 15.5mm)

BRM S-403M (for Mini and A112 with wheels S-402MC Ø 13.7mm).

Front tires **GROUP 2**

BRM s-403k - BRM s-403vw (Scirocco original) on wheel Ø 16.7mm)

9.2 It's allowed to grind the front tires homogeneously over the entire surface of the tyre.

9.3 When the model is ready during the verification the front rims must touch the track

10. Braids – Motor wires

10.1 Free braids and motor wires.

10.2 To fix the wires to the guide it's allowed to use grub screws or cable eyelets.

10.3 You can fix the wires on the chassis



s-403

s-403s



s-403f

s-403fl

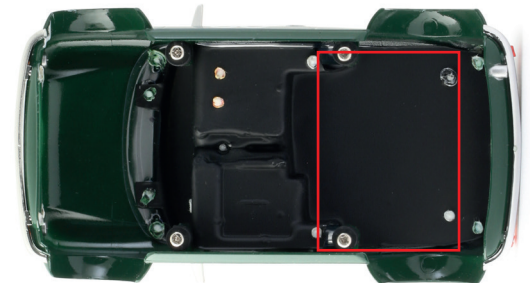
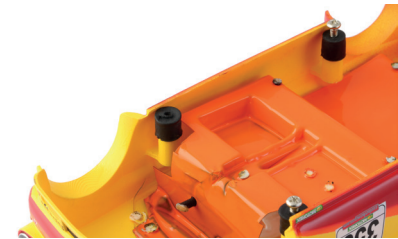
TECHNICAL

Rules

MODEL	WEIGHT (without rubber and screws)
Mini Cooper	34g
Simca 1000	46g
NSU TT	43g
Abarth 1000 TCR	35g
A 112 Abarth	43g
Renault Gordini r8	41g
Opel Kadett GTE	45g
Alfa GTA	42g
Escort MKI	42g
BMW 2002	45g
VW Scirocco	44g

11. Body

- 11.1 At the start the model must have all his parts except for wipers, hooks and mirrors).
- 11.2 Mandatory the rubber covers for body posts **BRM S-013R, S-013RA, S-013RB** or **S-013RC**.
- 11.3 It's allowed to change the height of the body adding spacers inside the rubber covers using brass spacers of 0.5mm **BRM s-011c** or 1.0mm **BRM s-011d**.
- 11.4 The fixing body screws must be the original **S-421B** or **S-421A** (M2x6 sink head for 1.3mm allen key) or the Revoslot **RS213B** (1.5mm allen key).
- 11.5 Weight bodies, see the list on the right.
- 11.6 If it's necessary add weight to reach the minimum weight, it must be located on the red area under the cockpit.. (see photo)
- 11.7 To facilitate the assembling of the cockpit it's possible cut the legs of the driver from the knee.



12. Body exceptions

Abarth 1000 TCR

- 12.1 It's allowed to use both types of rear bonnets and to not use the original side mounts. The rear bonnet must be kept open like the original model.
- 12.2 It's allowed to scratch material inside the rear wheel arch to get a better rolling of the rear tyre.

Simca 1000

- 12.3 It's allowed to scratch material inside the rear wheel arch to get a better rolling of the rear tyre.

BMW 2002

- 12.4 You can replace the whole BMW cockpit using a full lexan cockpit one like the SC7902 or one similar.
You can remove the rear black plastic part from the body.

SCIROCCO

- 12.5 You can replace the whole Scirocco lexan cockpit using a full lexan one.

