

YOUNGTIMER TROPHY GRUPPO 2

2/3
APRILE
2022

TECHNICAL Rules



Loc. RONCOLE VERDI 14/15
BUSSETO - PARMA - ITALY

The **BRM** models allowed to race for the 2 classes are:

MINICARS:

NSU TT



RENAULT R8 GORDINI



Mini Cooper



ABARTH 1000TCR



SIMCA 1000



A 112 ABARTH

GROUP 2:

Ford Escort MK I



Alfa Romeo GTA



Opel Kadett GTE



BMW 2002



Introduction

This regulation specifies in detail the features and components that the cars must respect.

Changes not specified in the rules are prohibited.

On some models we clarify the allowed changes.

During the technical inspections and the races, the only allowed lubricants will be supplied by the organization.

Even if there will be supplied some soldering/welders the organization will not be responsible for their malfunction.

Each team should have his own during verification and race.

TECHNICAL Rules

Supply of motors and tires

The organization will drawn for each model:

1 original motor **BRM-blue** 19.000rpm - **BRM s-417**;

1 Nylon Pinion 12T **BRM s-420** diameter 6,8mm;

1 Nylon Pinion 11T **BRM s-420S** diameter 6,4mm

Rear tires: **BRM s-404** (MINICARS), **BRM s-404k** (GROUP 2)

s-404M (Mini Cooper - A112 with wheels S-402MC)



S-402 - Wheels



S-404
Rear tyres

S-402MC - Wheels



S-404M
Rear tyres (x2)

The tires and motor assembling will be in "Park closed".

The motors will be selected by the organization checking rpm and energy to be most equal as possible.

TECHNICAL

Rules

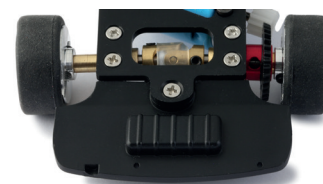
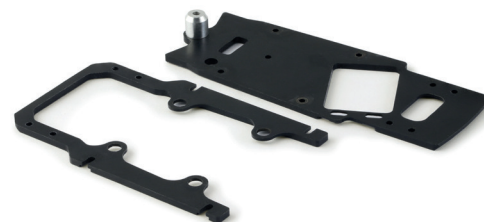
1. Maximum track

- 1.1 The rims can't be out from the wheel arches (view from the top).



2. Chassis

- 2.1 Each model must have his own specific chassis (internal/external).
- 2.2 The 2 chassis must be fixed using the brass BRM nuts original **s-415** (h 1.5 mm) or **s-415a** (1.0 mm no movement), **s-415b** (h 2.0 mm), **s-415c** (h 2.5 mm) o **s-415d** (h 3.0 mm).
- 2.3 The rear plastic part of the chassis must be assembled (except Mini Cooper).



3. Motor holder

3.1 The only allowed motor holder is the original **BRM s-413** + photoetch.

4. Brass joint – Axle holders

4.1 MINICARS: Brass joint original **BRM s-414**.

4.2 MINICARS: Rear brass axle holders **S-412** (large), **S-412F** (narrow) or aluminum axle holder double bearings **S-412S** (camber).

GROUP2: Rear stock axle holders BRM: Kadett GT/E S-412K, Alfa GTA/BMW2002 S-412A, Escort MKI **S-412E** (straight).

4.3 MINICARS: Front original axle holders BRM **S-411** or **S-411M** (Mini Cooper-A112 independent axle) (straight)

GROUP2: Front original axle holders BRM: Kadett GT/E **S-411K**, Alfa GTA/BMW2002 **S-411A**, Escort MKI **S-411E** (camber).

4.4 For the MINICARS class you can assemble the axle holders independent wheels **S-411M** on all the models.

s-413



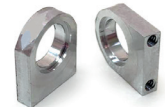
s-414



s-412f



s-412s



s-412k



s-411



s-411m



s-411k

5. Axles – Bearings - Spacers

5.1 Front axle free

A112 / Mini Cooper: front semi-axle **BRM S-416M** or axle with stopper.

GROUP 2: front semi-axle **BRM S-416K/416A** or axle with stopper.

5.2 MINICARS: Rear axle free or semi-axle **BRM S-416J / S-416** (included also front 56mm axle)

GROUP2: Rear axle free or BRM axle 58mm **S-416KR**.

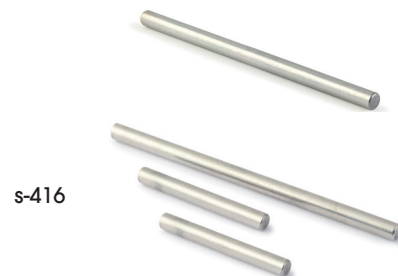
5.3 To use the front independent axle holders **BRM s-411m**, use semi-axles **BRM s-416m**.

5.4 MINICARS: Brass original bearings **BRM s-409**

5.5 Free ball bearings or **BRM S-410**

5.6 Free spacers for 3mm axle.

5.7 It's allowed to use stoppers for 3mm axle.



6. Spur gear

6.1 Original spur gear 33T **BRM s-419** or new Ergal **BRM s-419a**.



7. Pick-up

7.1 Pick-up original **BRM s-026ss**.



7.2 Allowed Pick-up REVOSLOT rs210 - rs210w.



7.3 It's allowed remove the spring and reduce the height of the blade.



TECHNICAL

Rules

MODEL	FRONT WHEELS	REAR WHEELS	Ø
Mini Cooper	s-402m / 402 mc	s-402m / 402 mc	16,8 mm / 13,7 mm
Simca 1000	s-402 / 402s	s-402 / 402s	17,0 mm
NSU TT	s-402	s-402	17,0 mm
Abarth 1000 TCR	s-402f	s-402fr	15,5 mm
Renault Gordini r8	s-402	s-402	17,0 mm
A112 Abarth	s-402s / 402 mc	s-402s / 402 mc	17,0 mm / 13,7 mm
Opel Kadett GTE	s-402kf	s-402kr	16,7 ant. - 17,3 post.
Escort MK I	s-402kf	s-402kr	16,7 ant. - 17,3 post.
Alfa GTA	s-402kf	s-402kr	16,7 ant. - 17,3 post.
BMW 2002	s-402kf	s-402kr	16,7 ant. - 17,3 post.

8. Wheels - Inserts

8.1 See the wheels tabel

8.2 The wheel inserts are mandatory but you can interchange them between the models but they must be the same type on the 4 wheels



9. Wheels - Front tyres

- 9.1 Front tires **BRM S-403** (original on wheel Ø 17mm)
Front tires **BRM S-403S** (lowered on wheel Ø 16.8/17mm)
Front tires **BRM S-403F** (original on wheel Ø 15.5mm)
Front tires **BRM S-403FL** (lowered on wheel Ø 15.5mm)
Front tires **BRM S-403K** (for all the GROUP2 cars on wheel Ø 16.7mm)
Front tires **BRM S-403M** (for Mini and A112 with wheels S-402MC Ø 13.7mm).
- 9.2 When the model is ready during the verification the front rims must touch the track

10. Braids – Motor wires

- 10.1 Free braids and motor wires.
- 10.2 To fix the wires to the guide it's allowed to use grub screws or cable eyelets.
- 10.3 You can fix the wires on the chassis



s-403

s-403s



s-403f

s-403fl

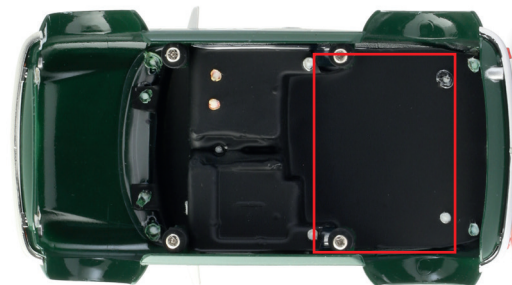
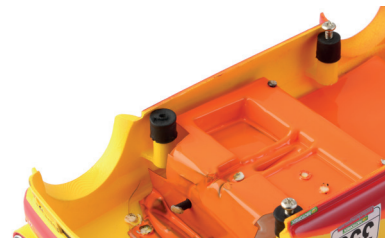
TECHNICAL

Rules

MODEL	WEIGHT (without rubber and screws)
Mini Cooper	34g
Simca 1000	46g
NSU TT	43g
Abarth 1000 TCR	35g
A 112 Abarth	43g
Renault Gordini r8	41g
Opel Kadett GTE	45g
Alfa GTA	42g
Escort MKI	42g
BMW 2002	45g

11. Body

- 11.1 At the start the model must have all his parts except for wipers, hooks and mirrors).
- 11.2 Mandatory the rubber covers for body posts **BRM S-013R, S-013RA, S-013RB** or **S-013RC**.
- 11.3 It's allowed to change the height of the body adding spacers inside the rubber covers using brass spacers of 0.5mm **BRM s-011c** or 1.0mm **BRM s-011d**.
- 11.4 The fixing body screws must be the original **S-421B** or **S-421A** (M2x6 sink head for 1.3mm allen key) or the Revoslot **RS213B** (1.5mm allen key).
- 11.5 Weight bodies, see the list on the right.
- 11.6 If it's necessary add weight to reach the minimum weight, it must be located on the red area under the cockpit.. (see photo)
- 11.7 To facilitate the assembling of the cockpit it's possible cut the legs of the driver from the knee.



12. Body exceptions

Abarth 1000 TCR

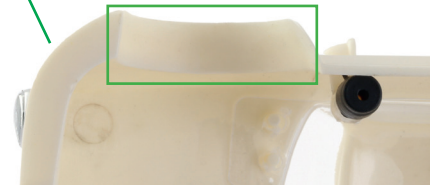
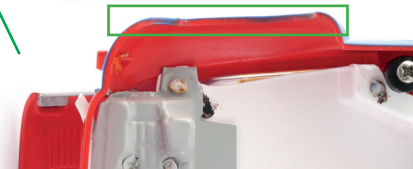
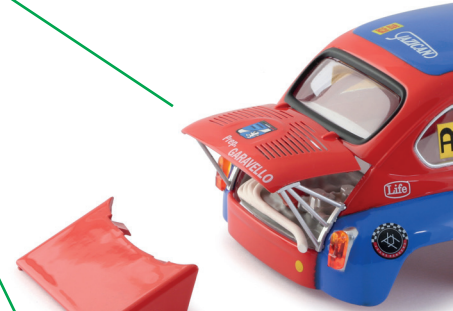
- 12.1 It's allowed to use both types of rear bonnets and to not use the original side mounts. The rear bonnet must be kept open like the original model.
- 12.2 It's allowed to scratch material inside the rear wheel arch to get a better rolling of the rear tyre.

Simca 1000

- 12.3 It's allowed to scratch material inside the rear wheel arch to get a better rolling of the rear tyre.

BMW 2002

- 12.4 You can replace the whole BMW cockpit using a full lexan cockpit one like the SC7902 or one similar.
You can remove the rear black plastic part from the body.





GRUPPO 2

HISTORICAL CHAMPIONSHIP



SLOT_UP A.S.D. - Loc. RONCOLE VERDI 14/15 - BUSSETO - PARMA - ITALY